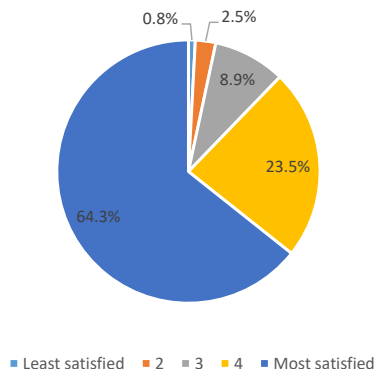


**Satisfaction with Current Model
(District-Wide Responses)**

Rating	Percentage	Number
Least satisfied	0.8%	5
2	2.5%	15
3	8.9%	53
4	23.5%	140
Most satisfied	64.3%	384

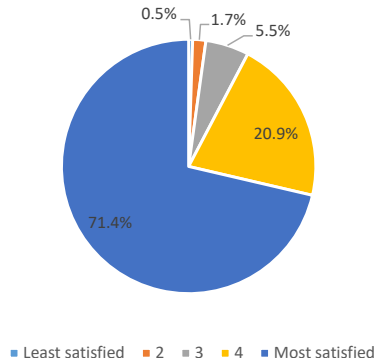
Satisfaction with Current Model



**Satisfaction with District Communication
(District-Wide Responses)**

Rating	Percentage	Number
Least satisfied	0.5%	3
2	1.7%	10
3	5.5%	33
4	20.9%	125
Most satisfied	71.4%	426

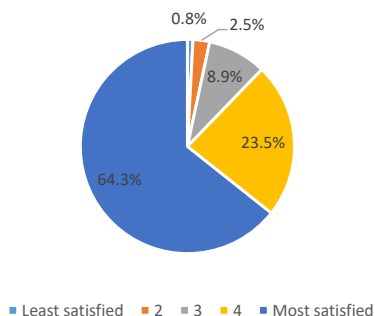
District Communication



**Satisfaction with School/Teacher Communication
(District-Wide Responses)**

Rating	Percentage	Number
Least satisfied	0.8%	5
2	2.5%	15
3	8.9%	53
4	23.5%	140
Most satisfied	64.3%	384

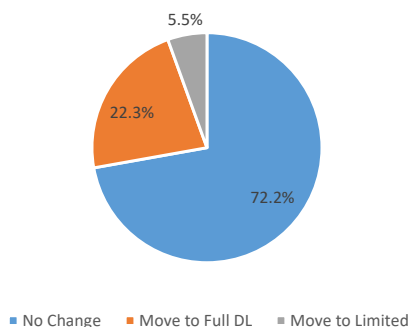
School/Teacher Communication



**Thoughts on Moving Forward
(District-Wide Responses)**

Response	Percentage	Number
No Change	72.2%	431
Move to Full DL	22.3%	133
Move to Limited	5.5%	33

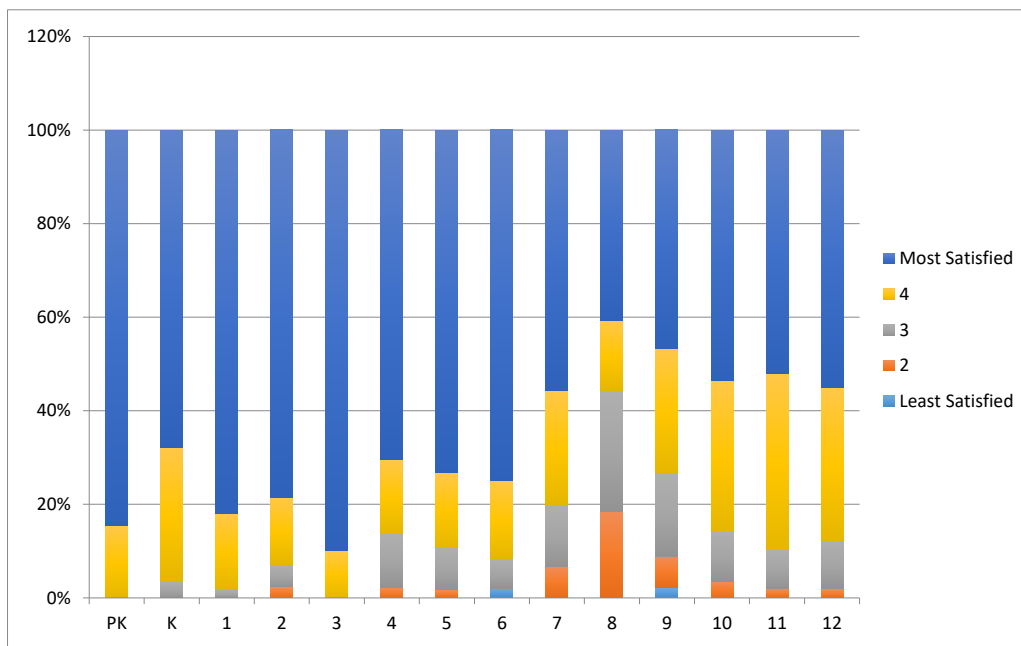
Thoughts Moving Forward



Satisfaction with Teacher/School Communication by Grade Level

Grade Level:	Least Satisfied	2	3	4	Most Satisfied	
PK	0%	0%	0%	15.4%	84.6%	100%
K	0%	0%	3.8%	28.3%	67.9%	100%
1	0%	0%	2%	16%	82%	100%
2	0%	2.4%	4.8%	14.3%	78.6%	100%
3	0%	0%	0%	10.2%	89.8%	100%
4	0%	2.3%	11.4%	15.9%	70.5%	100%
5	0%	1.8%	8.9%	16.1%	73.2%	100%
6	2.1%	0%	6.3%	16.7%	75%	100%
7	0%	6.7%	13.3%	24.4%	55.6%	100%

8	0%	18.5%	25.9%	14.8%	40.7%	100%
9	2.2%	6.7%	17.8%	26.7%	46.7%	100%
10	0%	3.6%	10.7%	32.1%	53.6%	100%
11	0%	2.1%	8.3%	37.5%	52.1%	100%
12	0%	2%	10.2%	32.7%	55.1%	100%



Summary of comments about current school option:

*Many parents expressed appreciation and gratitude for the flexibility of the district and the efforts to maintain safe learning environments (especially in-person).

*For many children, distance learning is difficult. MANY families expressed a need to maintain in-person learning.

*Several parents who have selected distance learning expressed appreciation for the district's efforts to address parent concerns from last year's experience.

*Several comments about the closing of Wawaloam for a two-week period as a concern, especially with respect to timeliness of notification based on RIDOH information.

*Some parents expressed a desire for fewer children in elementary classrooms to maximize social distancing.

*Some JHS parents expressed concern about the lack of teacher interaction during at-home days, suggesting the experience mirror the high school and Metcalf.

*Many parents expressed significant concerns about social-emotional health of their children, and the need for in-person learning.

*Many parents expressed concern about the trend of rising cases in the community and the State, with most still preferring in-person learning and others suggesting a temporary pause may be necessary.

Summary of comments about district communication

*Most parents extremely grateful for the level of transparency and communication from the district level.

*Several parents indicated appreciation, acknowledging that their voices are being heard.

*Some parents raised concerns about the timeliness of information regarding positive cases and quarantine requirements (with most recognizing that this is a RIDOH issue). We have taken steps to remedy this.

*Some parents indicated that district communication often does not apply to full distance learning classrooms.

Summary of comments about school/teacher communication

*Many, many, many parents took the time to provide special shout outs to their child's teacher(s), especially at the elementary schools.

*Parents of elementary distance learning classrooms are overwhelmingly positive about the level of interaction and communication from teachers, with many noting significant improvements to last year's experience.

*Many parents of JSHS students expressed concern for the level of communication over missing or failing work, especially given the circumstances of hybrid learning and increased levels of anxiety.

*Many JSHS parents indicated that Aspen as a tool for communication is ineffective, especially when assignments and grades are not entered into the system in a timely manner, making it difficult to hold their children accountable.

*Several parents expressed concern about the timeliness of information related to positive cases and quarantine requirements. Families want to be notified even if cases do not impact their child's classroom(s).

*Some parents expressed concern over the lack of teacher interaction on distance learning days (for some, but not all teachers).

Summary of (new) additional comments

*Several parents expressed concern for after the holiday break, given that families will travel and gather, resulting in another spike in cases. These parents recommend a 1-2 week move to distance learning after the break to prevent another spike.

*Many parents are having a hard time balancing the social-emotional and academic needs of their children and their anxiety over the rising cases in the State - but recognize and applaud the efforts of the district and schools.