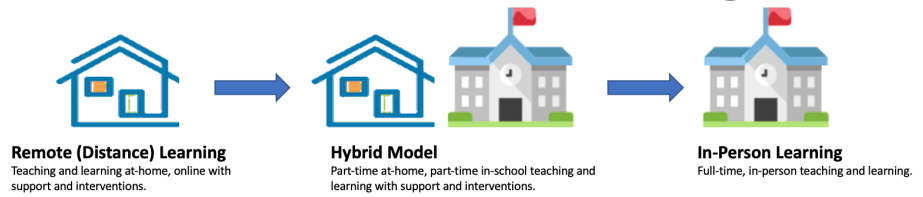




Continuous Learning 2.0



School will start on September 9 in the first phase of our Continuous Learning 2.0 Plan; remote (online) learning. The first days will be dedicated to teachers getting to know their students and families, building relationships, completing assessments, and building an understanding of the online learning platforms. Read the Reopening Schools 2020 **Continuous Learning 2.0 Plan** [HERE](#).

The **Continuous Learning 2.0** model is a **three-prong phased-in approach** for reopening schools and is based on primary considerations of the community stakeholder group with the health and safety of students, families, and staff a priority:

- Remote Learning
- Hybrid Model
- In-Person Instruction



Technology

We are committed to providing **Chromebooks** for each student during the first month of school. This means families of current K - 5 students will keep the Chromebook(s) that were checked out to their child in the spring and we will provide additional Chromebooks in September, as needed per household. Example: If you have more than one child in your household, each child will receive their own device based on the distribution phase. We have organized our Chromebook distribution into the four phases listed.

Student Schedules



Elementary and Secondary school schedules will consist of a blended model of live and self-directed teaching and learning, meaning part of the time students will be online with their teachers and part of the time they will be independently completing their assignments. Student engagement will be monitored and supports will be put in place where needed to meet each student's needs. View the detailed schedules for elementary and secondary schools [HERE](#).

Phase 1: Collection and Replacement of Damaged Chromebooks **by Appointment**

- **Dates:** August 24 - 28, 2020
- **Times:** 7:30 am - 3:30 pm
- Location: Marysville School District Service Center East Parking Lot | 4220 80th Street NE

Schedule Appointment [HERE](#)

Dates, times, and locations for Phases 2 - 4 for Chromebook distribution will be shared at a later date.

Phase 2: Grades 6 - 12 and new secondary students

Phase 3: Grades 3 - 5 and new elementary students

Phase 4: Grades K - 2 and new elementary students

Attendance / Engagement



Schools have a plan to take **daily attendance** for all students, regardless of our teaching mode, as well as a tiered approach to supporting students not participating and aligned to the OSPI attendance rules.

Students will be considered present and engaged if:

- Attendance in the ZOOM lesson
- Daily logins to Google Classroom, and interactions with staff on Zoom
- Submitted work on assignments in Google Classroom
- Assignment completion and effort



Marysville School District will start the year with at-home, remote (online) learning, then, when safe and healthy to do so, move to a hybrid model (part in-person, part at-home learning), and eventually return to 100% in-person learning. A part of the Continuous Learning 2.0 model includes an **option** for parents/guardians to enroll their child in a free online learning program through Edgenuity called **Marysville Online**.

Grading

Elementary (grades K -5)

The elementary report card is currently a standards-based report card aligned to common core expectations at grade levels K - 5. Read more about our elementary schools grading practices [HERE](#).

Secondary (grades 6 - 12)

A traditional A, B, C, D, or F grading scale will be used, Plus and/or Minus, Pass/Fail, No Credit (NC), Incomplete (INC). Read more about our grading practices for secondary schools [HERE](#).

Marysville Online FAQ

If I choose Marysville Online, is my child still enrolled in the district?

Yes, your child will still be enrolled in the Marysville School District.

If I choose Marysville Online, how long do I have to commit to being in this program?

Students enrolling in Marysville Online must commit to at least a semester of this program (January). Changes can be made for 2nd semester.

Does Marysville Online require that an adult be in the home with my child?

Yes, the program requires a "Learning Coach." This Learning Coach can be a parent or any adult who can support the student with questions throughout the day.

Is there a teacher involved in Marysville Online?

The role of the teacher in Marysville Online includes the following:

- *Case Management: The teacher will do weekly check-ins with students and families and be available to answer questions about the program during the week.*
- *Adjustment of Instructional Program: The teacher has the ability to change the instructional program to meet the needs of the student. This can include adding or changing lessons, creating live or recorded lessons, or adding/revising learning activities and assignments.*

Will these teachers be Marysville teachers?

Yes, each student enrolled in Marysville Online will be assigned a teacher from the district who will serve in the role described above.

For more information about Marysville Online, go to <https://www.msd25.org/o/district/page/marysville-online>